

CHICHESTER ART SOCIETY
SKETCHING PROGRAMME 2023 9.30 AM – 12.30 PM

Tuesday 4th April - Fishbourne Meadows

Parking is available in St Peter and St Mary's Church in Fishbourne Road West. The meadow can be accessed through the churchyard. If you are coming via the A27 take the Fishbourne exit and the church is about 200 yds on the left and it is signposted. Obviously it's a right turn if you are approaching from the other direction.



Friday 21st April - Chichester Canal

Chichester Canal offers a variety of subjects to sketch; boats, canoes, paddle boards and people; not to mention lovely views. Refreshments and toilet facilities are available in the Canal shop and nearby Public House. Parking at the canal is limited but you should be able to park in Terminus Road, just a short walk away or even Chichester Gate car park. There is also a car park at the Hunston Bridge end of the Canal and there are good views of the Cathedral from this end.

Wednesday 3rd May – Stansted House/Gardens

Stansted Gardens are situated near Rowlands Castle. Take the Funtington Road from Chichester, passing through East Ashling, Funtington and Aldsworth. Continue along Emsworth Common Road until you see the Stansted House sign on your right on the corner of Broad Walk. Turn right here and follow the road round and you will see the sign to the House and Garden Centre on your right. Refreshments and toilet facilities are available. This is a very popular venue offering lovely views of the House from the Arboretum. In addition there is the Dutch Garden with lots of interesting areas to sketch. Refreshments and facilities are available.



Tuesday 16th May – Chichester Allotments

We are early at the allotments again this year which will hopefully give you a different variety of plants etc., to sketch/paint. Access to the allotments is at the end of Little Breach, off St Paul's Road, where parking is available. You'll need to bring your own refreshments but we have permission to use the toilets at the Scope Centre just opposite.

Monday 5th June - The Trundle

The Trundle is an iron age hill fort on St Roche's hill about 3 miles north of Chichester. We meet on the side with the two tier car park, which is a right turn if you approach from the direction of the Weald and Downland Museum and left if you come via Lavant and past the racecourse.



Wednesday 21st June – Bosham Harbour

Pretty views of the boats in the harbour and Bosham Church and Village. Cafés and toilet facilities are available. From the A259 turn south from the roundabout north of the village, into Delling Lane. At the T-junction turn right and follow the road until you see the Craft Centre on your right. The car park is on the left.

Tuesday 11th July – Bishops Palace Garden

There are some lovely views of the Cathedral with plenty of space to sit. The gardens offer much scope for painting or sketching.

Refreshments and toilet facilities are available in the Cloisters of the Cathedral.

The gardens can be reached via South Street, West Street or the Avenue de Chartres (entrance at end of city wall just before the Indian Restaurant if coming from the multi-storey car park.)



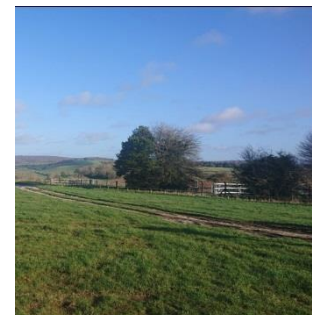
Emsworth Yacht Harbour, Hampshire, England
Photo: myourfootsteps.com thanks Michael Harper

Friday 28th July – Emsworth Yacht Harbour

This is an interesting location with a variety of views. The address is Thorney Road, Emsworth PO10 8BP. Take the A259 out of Chichester towards Bosham. Go through Southbourne and before you get into Emsworth you will see a sign on the right pointing out a left turn to Thorney Island (the sign is in red). Continue along this road until you see the turn to the Yacht Harbour on the right.

Wednesday 2nd August - The Trundle – the other side

This location offers wide open views of the south downs. There is a large parking area and an unrestricted view. If you are coming from West Dean continue past the right turn to the other Trundle site there will be two bends and the road climbs and then you will see the car park on your left. If you get to the race course you will have gone too far.





Thursday 17th August - Lavant Village Green

This is a lovely open view with amazing skies and lovely trees. There should be plenty of parking available in the Lavant Hall Car Park and also on the road along the far edge of the green. There is also a nearby stream running parallel with the road if you prefer to sketch along there.

Tuesday 29th August – West Dean

This is a very tranquil location, popular with ramblers. The river is winterbourne so will be dry in August but there is a pretty stone bridge. There is also a tea room close by. Coming from Chichester take the right turn immediately before the Selsey Arms Pub, continue until you come to the river area and turn left where there should be plenty of parking space.



Wednesday 6th September - Little Breach Allotments

The Little Breach Allotments is a very popular location we will have a second visit again this year.

Tuesday 19th September - Cowdray Park, Midhurst

This is a new location for us and a bit further afield than usual and it's probably worth thinking about car sharing. There is a large car park near the ruins in North Street close to the bus station. From the gate at the end of the car park join the raised causeway leading straight to Cowdray. The postcode for the car park is GU29 9DW.



I will be arriving at each location a few minutes before 9.30am and where if possible perhaps we could get together at the end of the session for a coffee and catch up.

I look forward to seeing you all.

Sharon Dean